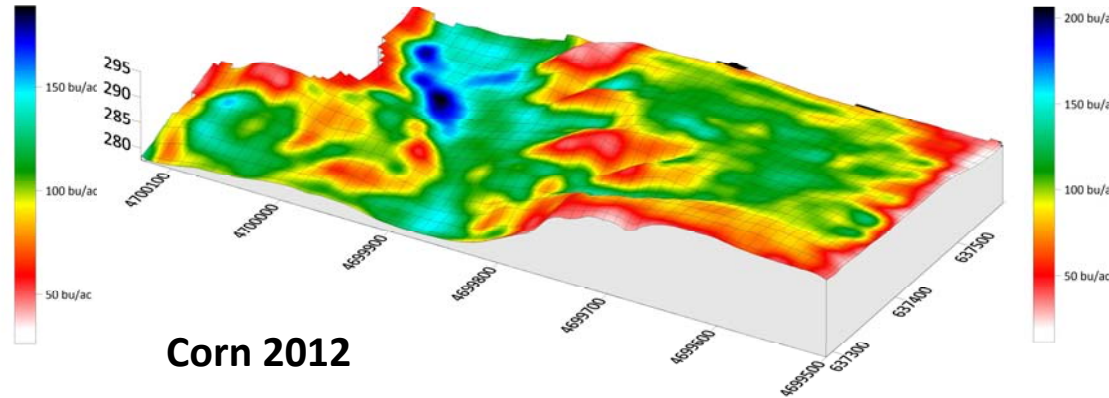
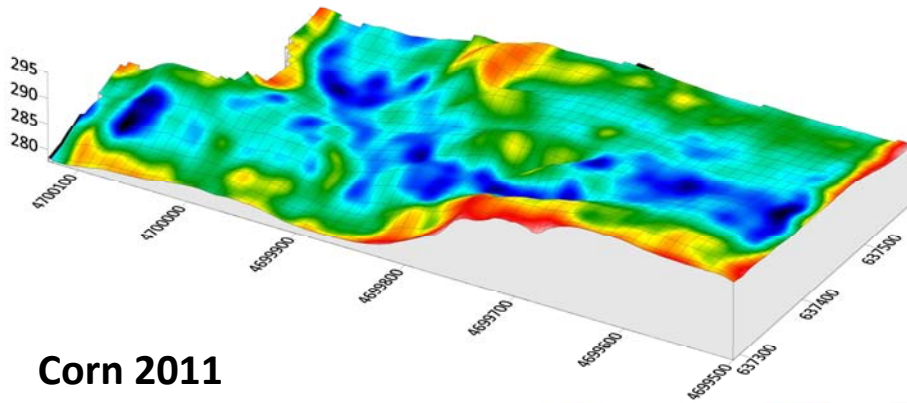
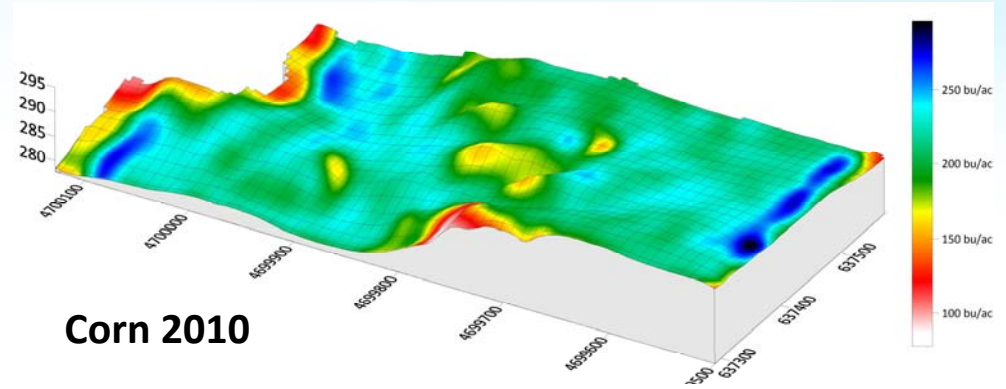
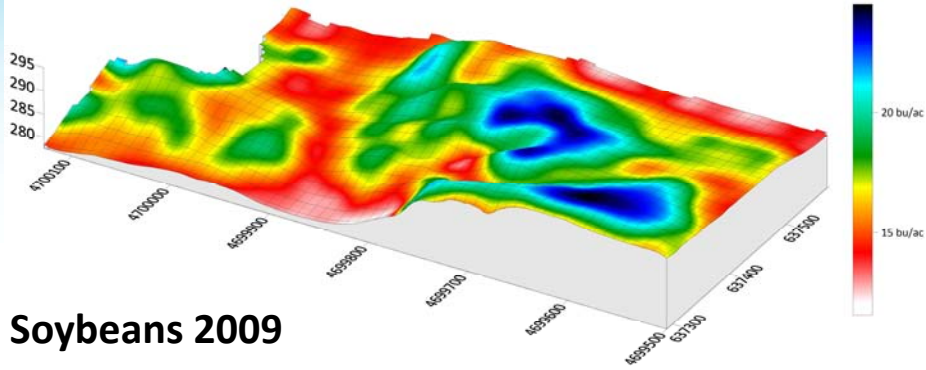


# MSU AGRICULTURE INNOVATION DAY

## FOCUS ON PRECISION

# TECHNOLOGY THAT PAYS



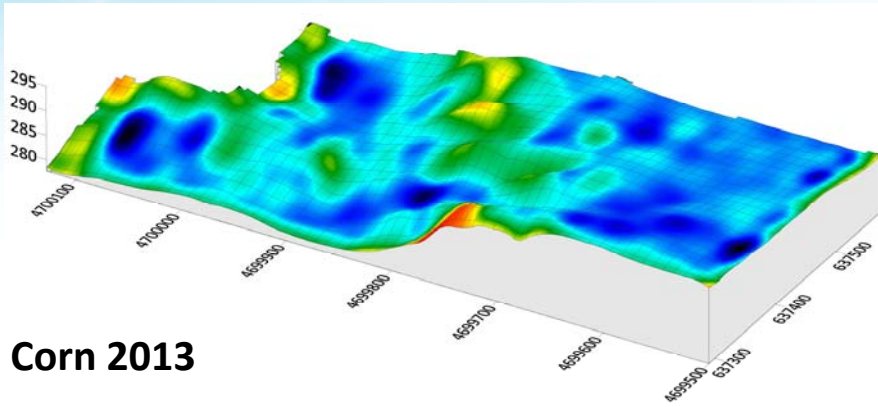
College of Agriculture  
and Natural Resources  
MICHIGAN STATE UNIVERSITY



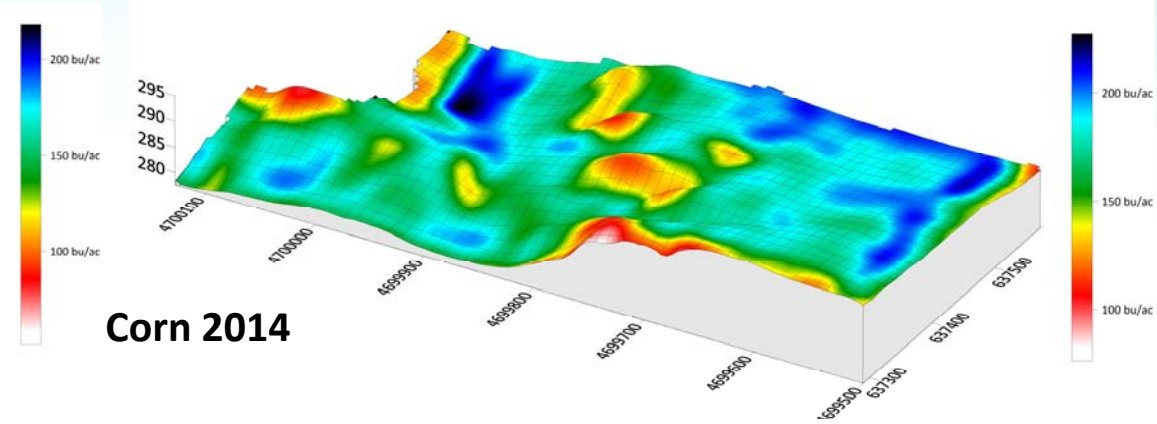
# MSU AGRICULTURE INNOVATION DAY

## FOCUS ON PRECISION

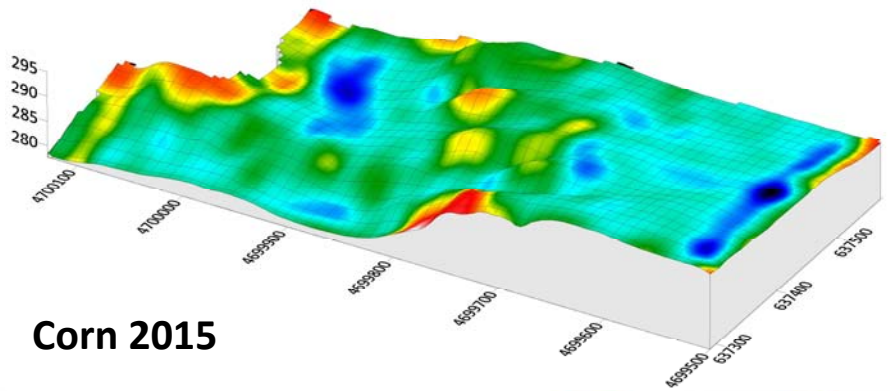
# TECHNOLOGY THAT PAYS



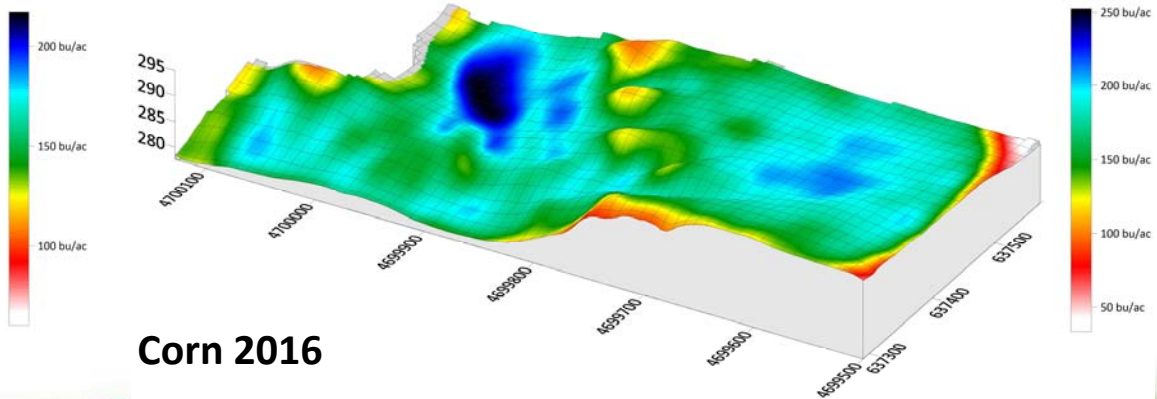
**Corn 2013**



**Corn 2014**



**Corn 2015**



**Corn 2016**



College of Agriculture  
and Natural Resources  
MICHIGAN STATE UNIVERSITY

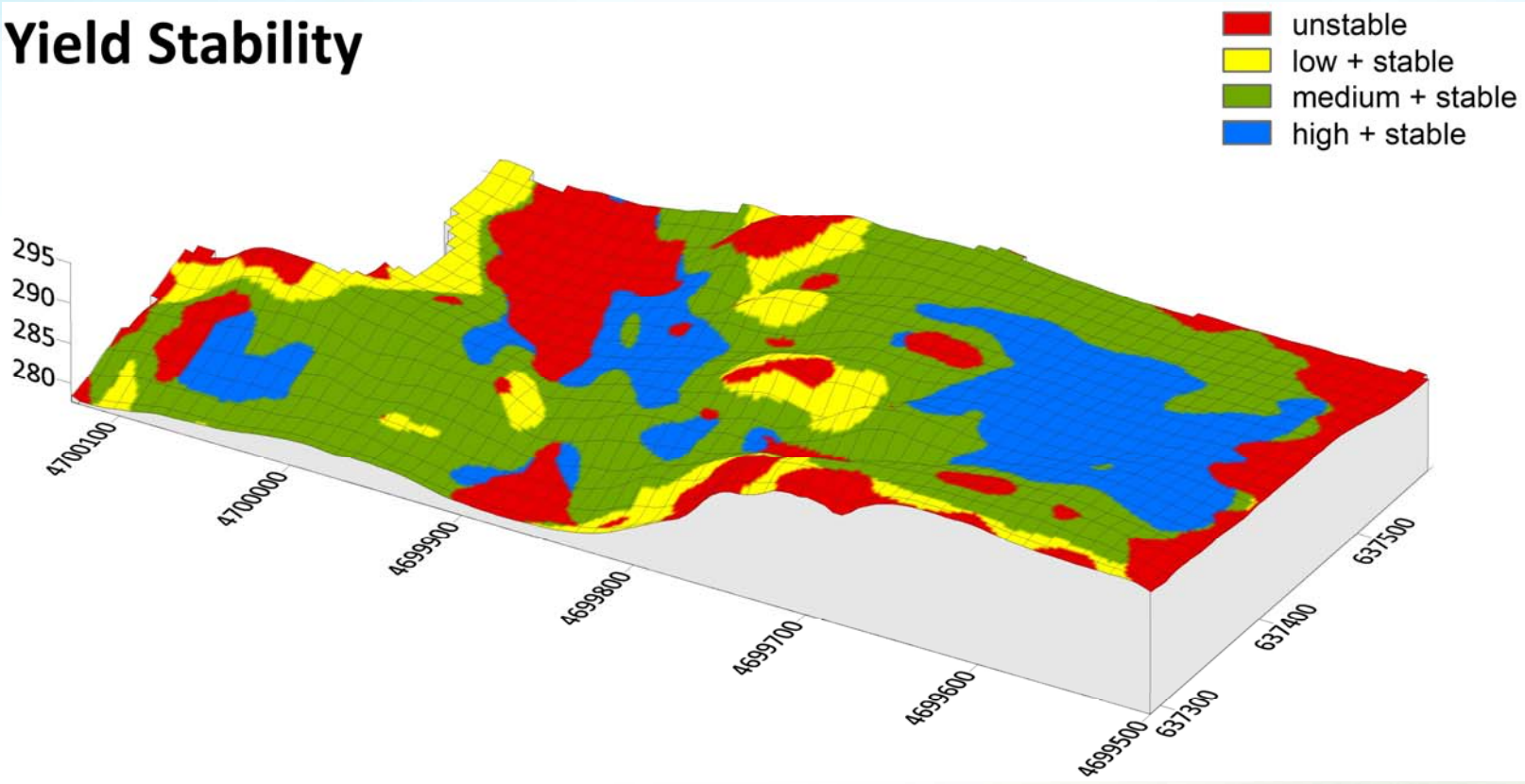


# MSU AGRICULTURE INNOVATION DAY

## FOCUS ON PRECISION

# TECHNOLOGY THAT PAYS

### Yield Stability



College of Agriculture  
and Natural Resources  
MICHIGAN STATE UNIVERSITY

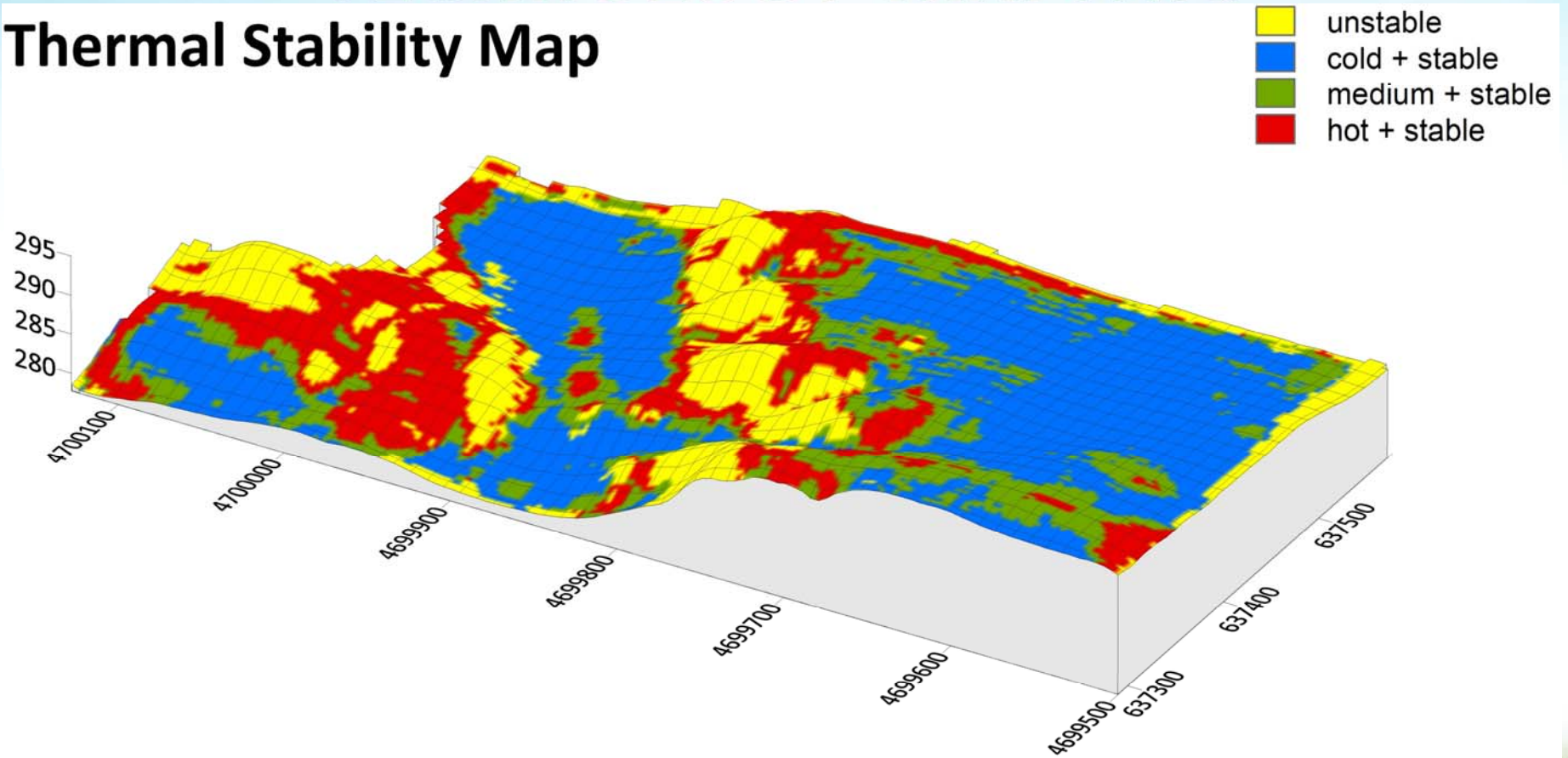


# MSU AGRICULTURE INNOVATION DAY

## FOCUS ON PRECISION

# TECHNOLOGY THAT PAYS

## Thermal Stability Map

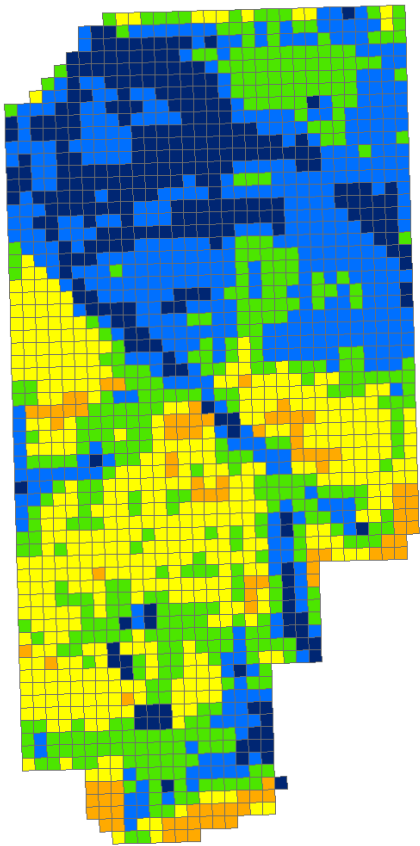


College of Agriculture  
and Natural Resources  
MICHIGAN STATE UNIVERSITY



# TECHNOLOGY THAT PAYS

**A Rx (Variable Rate N Fertilizer Sidedress Map  
in a Michigan Corn Field)**



Orange = 0 lb/ac (no plants detected)

Yellow = 55 lb/ac

Green = 80 lb/ac

Light Blue = 100 lb/ac

Dark Blue = 110 lb/ac

